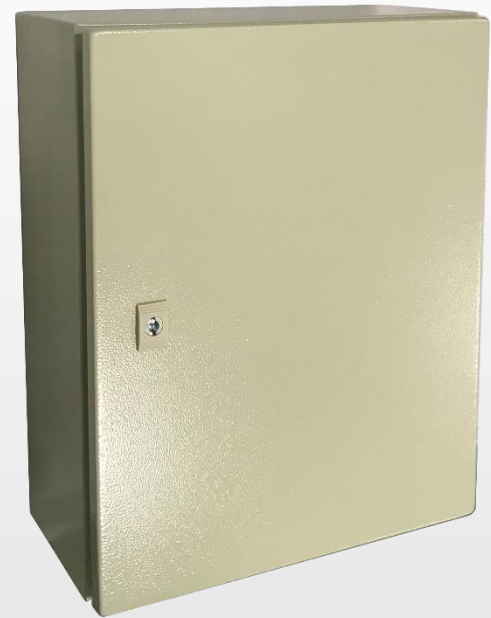


BE Series

Outdoor Rated Enclosure



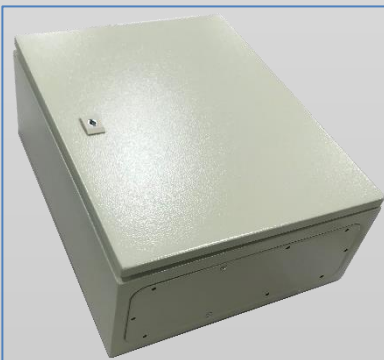
Shown: Single Lock Model

Features

- IP 66 Outdoor Rated Construction
- Generic Equipment Mounting Plate
- Removable Cable Entry Access Panel
- Key Lockable
- IK10 Impact Rating

These outdoor rated enclosures are designed to accept a variety of equipment for installations requiring key lock protection. A removable chassis is provided for attaching your equipment. The cable entry plate at the bottom of the unit can be modified as needed and reattached.

Customization options are available including custom colors, lock type, chassis hole patterns, OEM branding, and light pre-assembly. Contact your Broadsight sales representative for additional information.



Models:

BE-542	Enclosure, Outdoor, Beige, Single Key Lock, 500x400x200mm (approx. 20x16x8-in) External
BE-662	Enclosure, Outdoor, Beige, Double Key Lock, 600x600x200mm (approx. 24x24x8-in) External

Specifications:

Construction	Steel
Environment	Outdoor
Opening Size	Flange width 22mm (approx. 0.9-in) per side
Enclosure/Door Thickness	1.2mm
Mounting plate	1.5mm zinc coated steel
Finish	Powder Coat
Color	RAL7032
Ingress Protection	IP66
Impact Rating	IK10
Standards Met	RoHS Compliant
Ground Studs	Door/Backbox/Chassis
Mounting Hardware	Provided

All specifications are subject to change without notice.

© Broadsight Systems, Inc. All Rights Reserved. 08/20