

BLB Series

Video and Network Equipment Lock Boxes



Features:

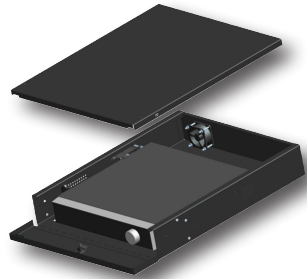
- Built-in 115V Fan
- Security Cam Lock
- Multiple Cable Access
- Rugged Steel with Black Powder Coat Finish
- Optional Wall Mounting Bracket Kit



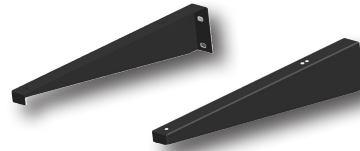
Broadsight Systems' security lock boxes are designed for ease of installation in a wide variety of applications and equipment types. Constructed from durable American made steel with rugged black powder coat finish, these boxes will prevent unwanted tampering of sensitive electronic equipment. A security cam lock is provided in the hinged front panel with key that rotates a heavy duty steel tailpiece to securely lock the box. When the front panel is open, the top lid is removable for easy installation and connection of equipment.

Multiple cable knock-outs are provided in the rear, bottom and side panels to allow flexibility of cable entry and various mounting positions. An internal fan with metal guard and perforated air flow openings are provided to promote cooling of equipment. The fan can be moved from the rear position to either side depending on mounting position to achieve best air flow.

BLB Series Video and Network Equipment Lock Boxes



Lock Box with DVR Inside



*Optional Wall Mounting
Bracket Kit BLB-WMB*

Specifications:

Model	BLB-17-1	BLB-21-1	BLB-24-1	BLB-24W-1
Fan	115V	115V	115V	115V
Volts	105 ~ 125VAC	105 ~ 125VAC	105 ~ 125VAC	105 ~ 125VAC
Current	< 0.15 Amps	< 0.15 Amps	< 0.4 Amps	< 0.4 Amps
Construction	CR Steel	CR Steel	CR Steel	CR Steel
Color	Black	Black	Black	Black
External Dimensions (HxWxD)	3.5"x 16.2"x16.7"	3.5"x17.7"x21"	5.1"x20.7"x 23.9"	7"x22.5"x 24.3"
Internal Usable (HxWxD)	3.4"x14"x15"	3.4"x16"x17"	5"x19"x20"	6.9"x20"x21"
Weight (lbs.)	13.5	17.5	24.5	31.75

Accessories:

BLB-WM1721	Wall Mounting Bracket for BLB-17 and BLB-21 Lock Boxes
BLB-WM24	Wall Mounting Bracket for BLB-24 and BLB-24W Lock Boxes

NOTE:

Standard unit is painted black. Additional colors are available by special order. Optional mounting bracket kits for wall or rack mounting are available as a standard item. Additional features and modifications can be made by special order. Please contact your Sales Representative or the manufacturer for details in matching the right equipment security solution to the equipment and application being used for best system performance.

All specifications are subject to change without notice.

© 2013 Broadsight Systems, Inc. All Rights Reserved. 04/13