

Sunshield

For BEX Series Explosion-Proof Housings

Features

- Powder Coated Aluminum Construction
- Stainless Steel Fasteners
- For Outdoor Use
- Adjustable Position

Models:*

BEX-SS-40140	Sunshield for BEX-40140
BEX-SS-50175	Sunshield for BEX-50175
BEX-SS-66205	Sunshield for BEX-66205

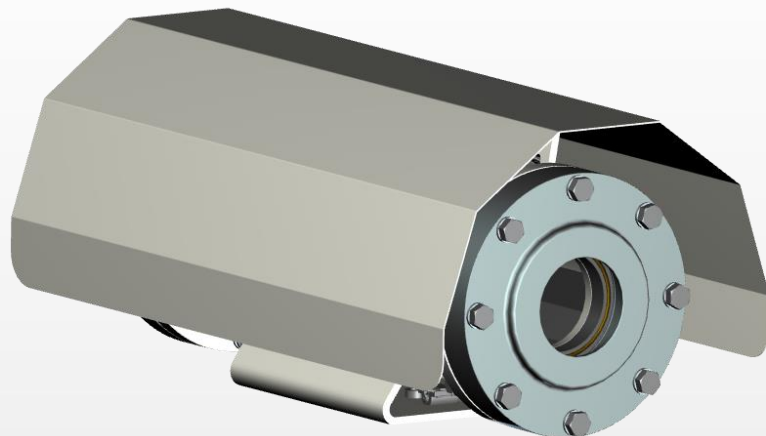
* Standard color is gray. Alternate and custom colors available. Contact the factory for details.

Specifications:

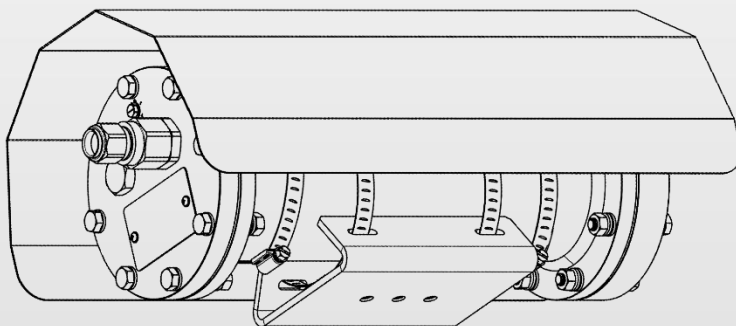
Construction	Aluminum with Stainless Steel Fasteners
Finish	Powder Coat Paint

Description

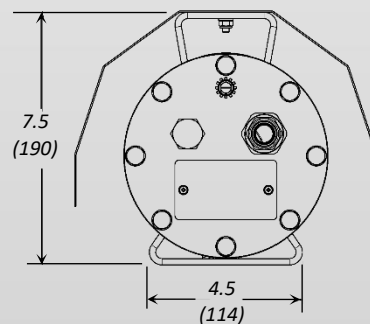
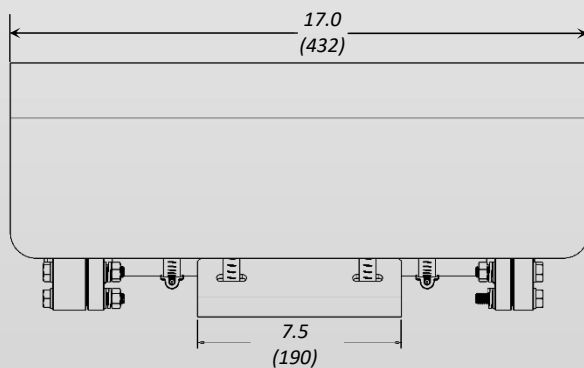
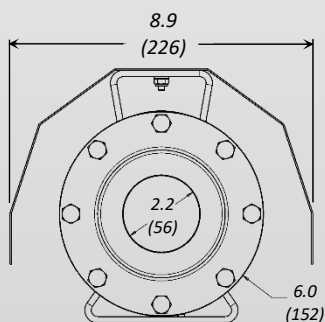
Sunshields are used to create shade for outdoor camera housings to reduce thermal absorption of solar radiation. In blocking sunlight, the sunshield itself heats up. The air gap between the sunshield and housing exterior helps dissipate the heat of the sunshield and prevents most of the heat from warming the enclosure and its payload.



Shown: BEX-SS-40140 Sunshield (Housing Sold Separately)



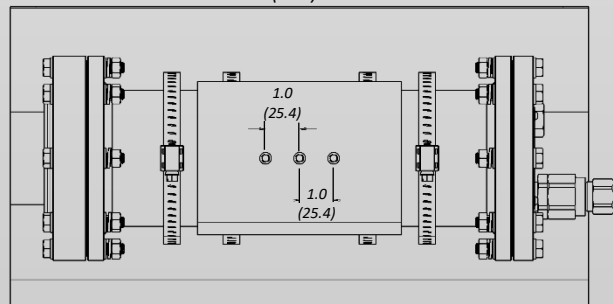
Sunshield Attachment Mechanism – Similar for All Models



Dimensional Drawings

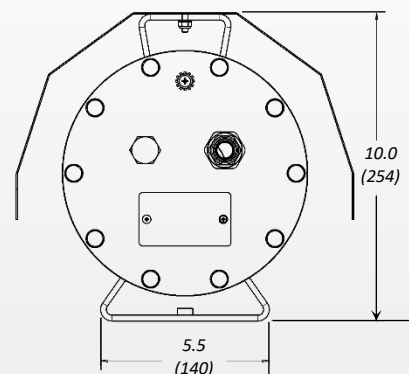
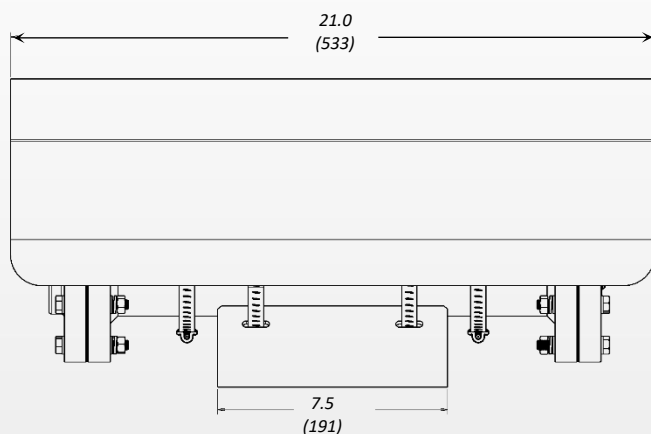
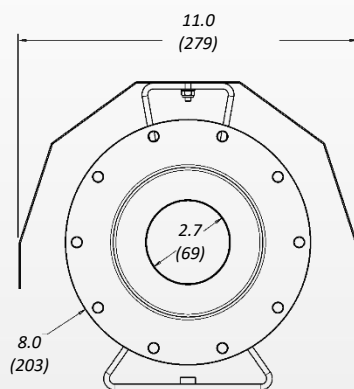
BEX-40140 Housing with
BEX-SS-40140 Sunshield

Units: In (mm)



Sunshield

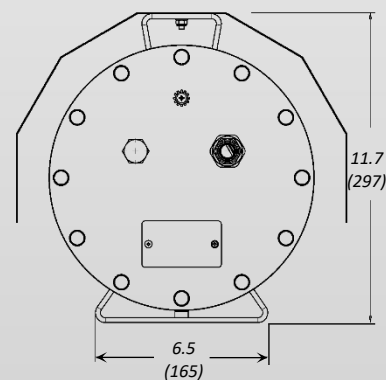
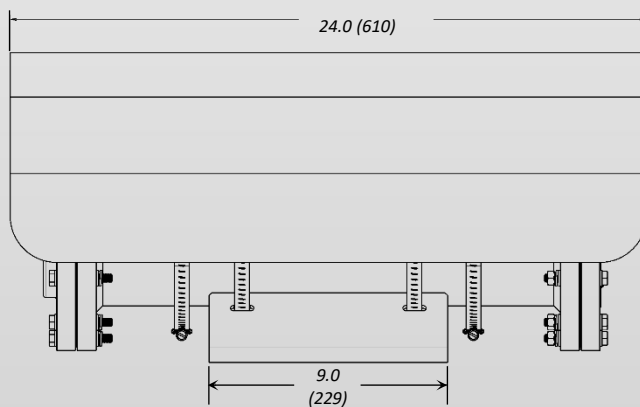
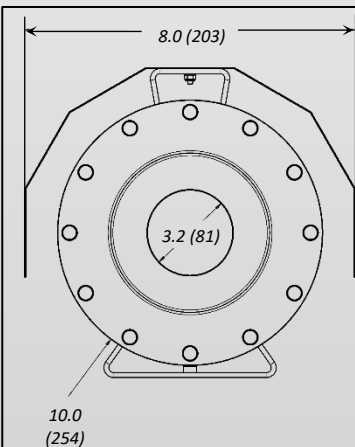
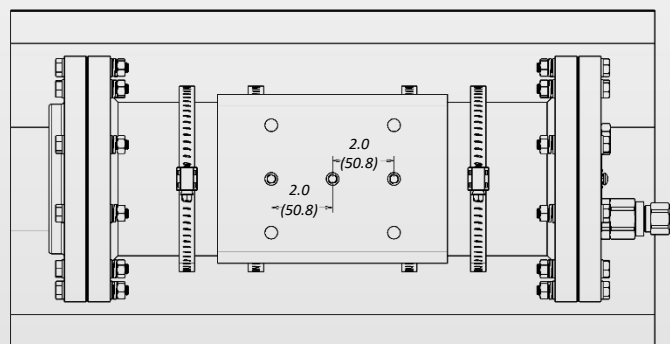
For BEX Series
Explosion-Proof Housings



Dimensional Drawings

BEX-50170 Housing with
BEX-SS-50170 Sunshield

Units: In (mm)



Dimensional Drawings

BEX-66205 Housing with
BEX-SS-66205 Sunshield

Units: In (mm)

